

LED Low-Profile Wall Pack

13-120W Replacement

evolucia
light evolved™

www.evocalighting.com

- Saves up to 83% of energy usage
- Extremely durable; up to 70,000 hour life with no bulb replacement
- Cutting-edge "heat sink" technology keeps the LEDs at their optimum performance temperature and extends product life
- Light uniformity increases visibility in a variety of areas
- Made in America and ARRA-Compliant



Features

- **Applications:** LED low-profile wall pack for low level security, stairwells, breezeways, and commercial applications.
- **Light Distribution:** Type IV Forward Throw
- **Input Wattage:** Available in 8, 15 and 30 Watts
- **L70 Life Expectancy:** 70,000+ hours
- **Durability:** Heavy-duty polycarbonate lens made of Bayer® material.
- **Efficacy:** Up to 60 lumens per watt
- **CRI:** 70 or above
- **Listings/Ratings:**    **IP66**
- **Warranty:** Manufacturer warrants products to be free from defects for a period of five (5) years. Please refer to complete warranty and terms and conditions document.

Specifications

Construction:

Luminaire is constructed of a one-piece cast, low-copper (<0.4%CU) aluminum alloy.

Lens:

Eyelid made from outdoor automotive grade 3M vinyl adhesive.

LED Module:

The LED light engine utilizes an aluminum metal-clad board for maximum heat transfer and supreme thermal management to extend product life. Control of the LEDs allows EvoLucia fixtures to maintain light levels equal to or greater than that of MH and HPS fixtures at much lower energy consumption levels and with an expected life that is greater than 70,000 hours.

LED Driver:

The LED driver is a constant-current device with a high-power factor correction to maximize power utilization. The driver meets UL 1310 / UL48 Class 2 with a built-in over-temperature protection. All drivers are rated IP66, 100% factory tested. Input voltage from 100-277 VAC. Passes FCC part 15, class B for both conducted and radiated emissions.

Finish/Color:

Finish is TGIC thermoset polyester powder coat paint, 2.5 mil nominal thickness. The standard color is black. Custom colors are available; consult factory.

Installation:

Luminaire mounts to recessed outlet box or can be surface-mounted. The LP3 luminaire is designed with a hanging bracket feature that allows the luminaire to be suspended during installation, which allows both hands to be free for wiring.



Advantage!
www.gsaadvantage.gov

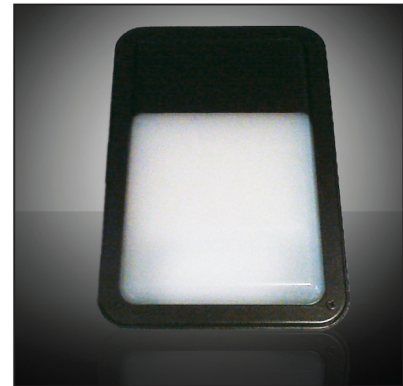
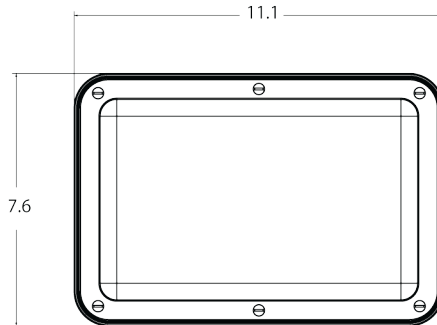
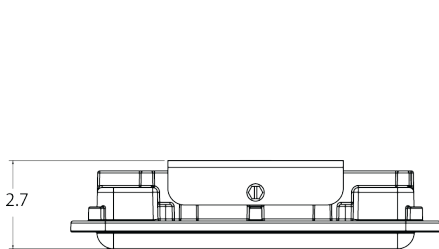
* All data subject to change without notice.

Reference www.EvoLuciaLighting.com or contact sales@sunoviaenergy.com for additional information. REV 01-2011
106 cattlemen road • sarasota fl 34232 • (941) 751-6800 • 1-866-806-7868 • www.evocalighting.com

© 2011 EvoLucia® Inc.

Project:	Approval:
Specifier:	

Technical Specifications



EPA: n/a **Width:** 11" (19.30 cm)
Weight: 5 lbs (2.27 kg) **Length:** 2.7" (28.18 cm)
Height: 7.5" (6.86 cm)

Third-Party Testing and Certifications

- The LP3 has undergone extensive third-party testing, including:
- LM79 (LTL Laboratory)
 - LM80 (LTL Laboratory)
 - UL Testing and Certification
 - Electrical Performance Testing including Line/Load Regulation, Input Power, Output Power, Efficiency (Sylvania)
 - Optical Performance/Integrating Sphere (Sylvania)

BUG Rating Available (LTL Laboratory)

Obtain up-to-date test results and certification documentation at www.evocalighting.com/technicallibrary

Order Code

LP3-WP /	<input type="text"/>	/	<input type="text"/>	/	<input type="text"/>	/	<input type="text"/>	/	<input type="text"/>	/	<input type="text"/>
Family	Wattage-Color Temp	Distribution Type	Lens Type	Mounting	Input Voltage	Finish					
	8-45 = 8W-4500K 15-45 = 15W-4500K 30-45 = 30W-4500K 8-60 = 8W-6000K 15-60 = 15W-6000K 30-60 = 30W-6000K	D4 = Type IV Forward Throw	PD = High Impact Diffuse Polycarbonate	WM = Wall Mount	UNV = 100-277 VAC	BB = Black BZ = Bronze CC = Custom (Consult Factory)					

To view photometric test reports and download IES files, visit evocalighting.com/technical-library

* All data subject to change without notice.